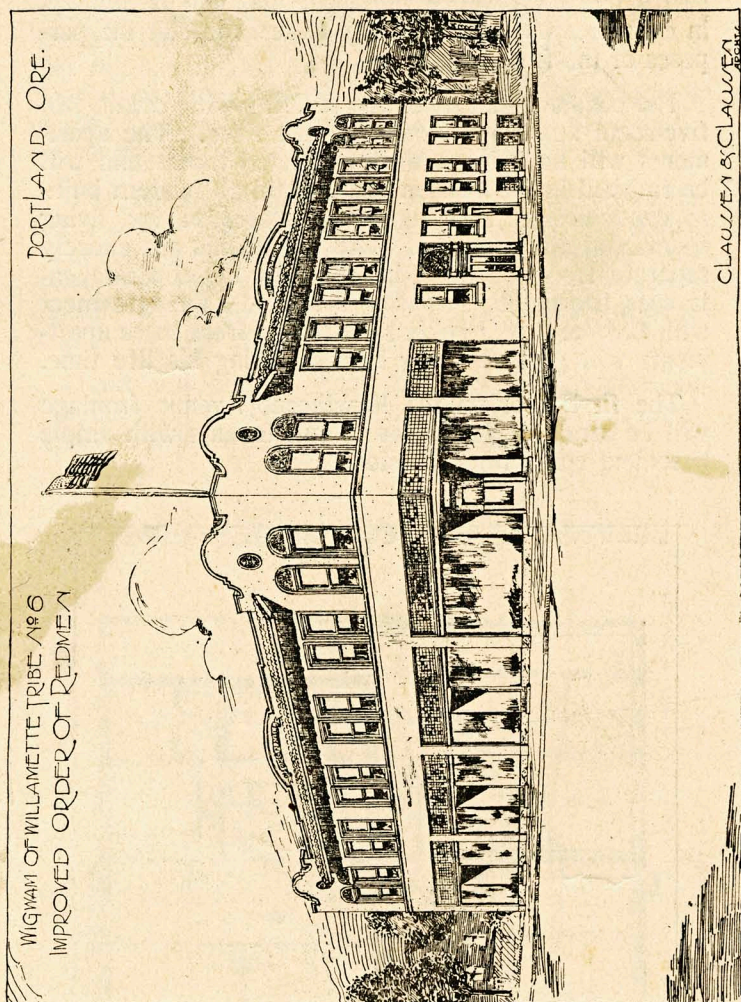

FLOOR PLAN
ELEVATION AND DESCRIPTION
OF BUILDING
FOR
Willamette Tribe No. 6
Improved Order of Red Men



SOUTHEAST CORNER OF HAWTHORNE AVENUE
AND EAST NINTH STREET
PORTLAND

SITE DONATED BY J. V. LANKIN, PAST GREAT SACHEM, WITH THE
PROVISION THAT A HOME BE ERECTED THEREON
WITHIN TWO YEARS FROM MAY 1, 1919

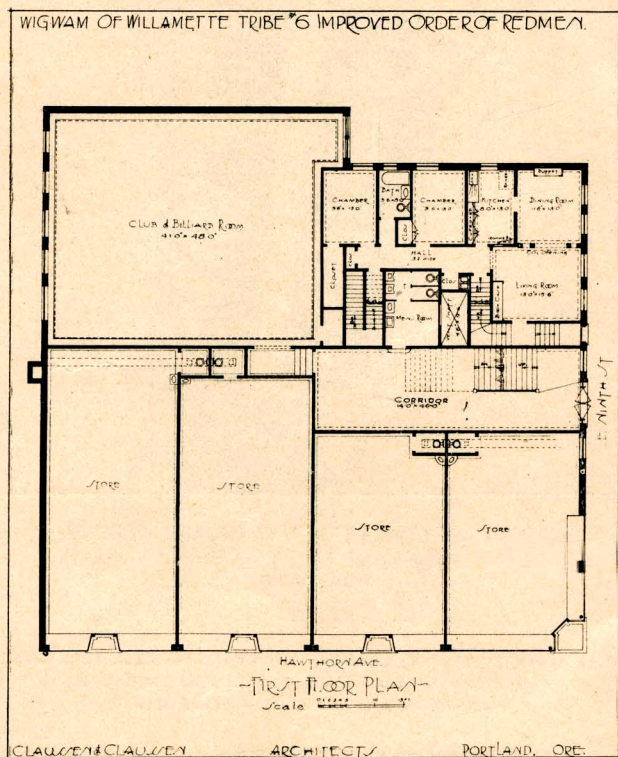
THE BUILDING

The building will be two stories in height with a full concrete basement and will cover a site 95x100, facing 95 feet on Hawthorne Avenue and 85 feet on East Ninth Street. The outside walls will be of hollow clay tile with cement stucco finish and stone trimmings. The design of the building leans toward the modified California Mission.

The building will be used partly for commercial and partly for the home of the Tribe and will be modern in every respect and carefully planned to suit the purposes of the fraternity.

The commercial part of the building will contain two five-room apartments, one on each floor. The apartments will have large well ventilated rooms and will be finished in the mission and contain all modern built-in conveniences with hardwood floors in the living rooms and dining rooms. The apartments are entirely separate from the main building, having separate entrances, basements, furnaces, etc. Under the agreement with Brother J. V. Lankin the revenue from these apartments will go to Brother Lankin during his life time.

The first floor on the Hawthorne Avenue frontage will be arranged for stores to suit tenants with ample basement space for each store.

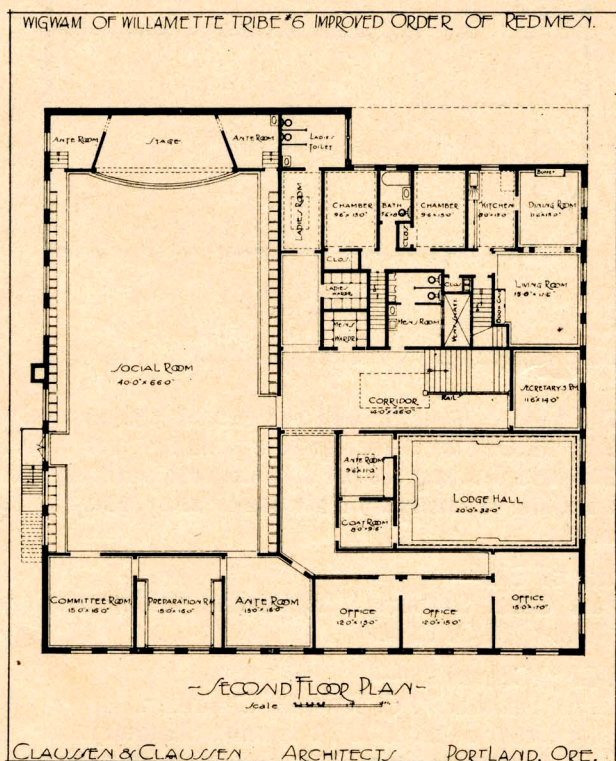


There will also be three rentable offices on the second floor on the Hawthorne Avenue frontage of the building.

The lodge rooms, of which there are two in number, are so arranged that they may be rented for lodge and social purposes. The larger of these two rooms is forty feet by sixty-six feet, with an eighteen-foot ceiling, with large committee room, ante rooms and a preparation room with paraphernalia lockers in connection therewith and has a well equipped stage. This room is to have a maple floor for dancing. There are two exits from this larger room direct to the street, the main entrance stairway and a drop stairway in the five-foot court. The smaller lodge room is twenty feet by thirty-two feet and has an ante room and coat room in connection. Special attention will be given to the lighting system of the lodge rooms and the proper control of the outlets, and to the placing of the officers' stations.

Grouped around the main stairway on the second floor, convenient to both lodge rooms, are the men's room with toilets in connection, the ladies' room with toilets and the men's and ladies' wardrobes or check rooms. A manager's office for the tribe is also provided near the head of the stairs.

A club and billiard room, forty-seven feet by forty feet, six inches, for the members of the Order is placed on the first floor in the rear of the building.

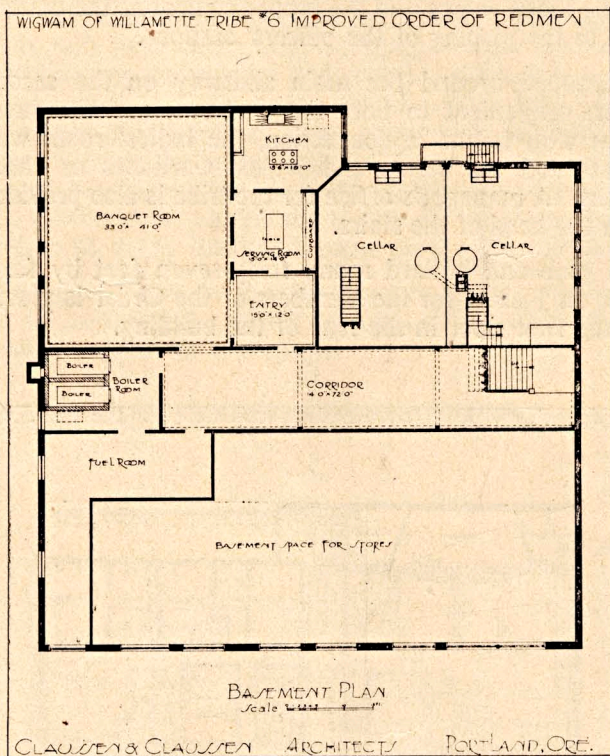


In the basement there is a banquet hall, thirty-three feet by forty feet, with all necessary kitchen and serving facilities.

The main entrance to the building is on the Ninth Street front, and a fourteen foot entrance hall with a wide stairway leads directly to the lodge rooms, offices, etc., on the second floor, to the club room on the first floor and to the banquet hall in the basement.

A steam heating system will be provided for the building with boiler and fuel rooms in the basement.

The building will cost approximately \$30,000.00, making a total conservative valuation of ground and building of approximately \$50,000.00.



The total bond issue will not exceed \$25,000.00, and will be secured by a mortgage extending over a period of 20 years, bearing six per cent interest, with a reservation for the retirement of all bonds as speedily as convenient.

Donor of Site—

Past Great Sachem J. V. Lankin, Willamette Tribe
No. 6., I. O. R. M.

Building Committee—

Great Sachem T. C. Reichle, Chairman.
Past Great Sachem L. H. Hamig, Secretary.
P. S. Adam Raucher, C. C. Hoffman, Wm. Seaholm.